



Your Meshmat has been delivered tightly rolled to minimise freight costs, carbon footprint and the retail price.

When removing the mat from the packaging, please note that any initial odour is due to it being stored in a sealed carton: this is normal when first unpacking it.

This product is compliant with the European REACH regulations on chemicals.

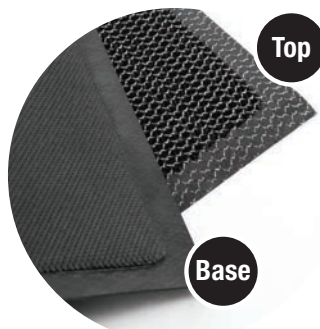
When removed from the packaging, your mat may not immediately lie flat and a little care may be required for it to effectively return to its original flat format

Do not place the mat down for general use until it is flat.

Follow the instructions below, in an area at room temperature and away from foot traffic, to ensure your mat is flat prior to use.

1

Unroll the mat and turn it face down on a flat surface.



2

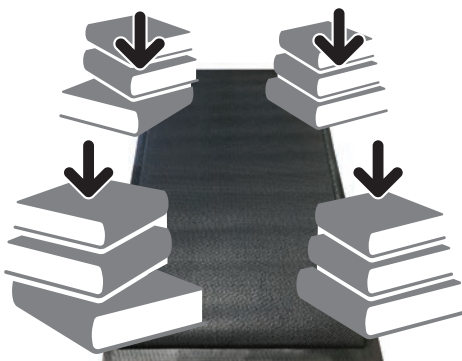


Gently bend the up-turned mat ends in an upward direction.

Repeat across the full width of the mat and on both ends.

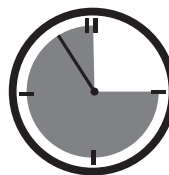
3

With the mat still turned face down, apply weights on top of the uplifting edges. Do not use pointed or sharp objects as they could damage your mat.

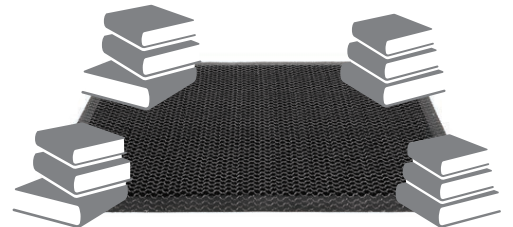


4

Leave the mat with the weights applied for 24-72 hours to ensure your mat flattens.



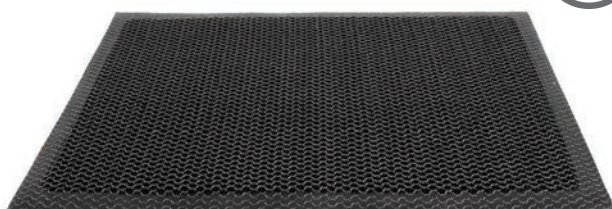
72°F / 22°C



5

Remove the weights, turn the mats face up and, if necessary, bend the edges in a downward direction.

Your Meshmat should now be ready for use.



Thank you for choosing a Meshmat!

